

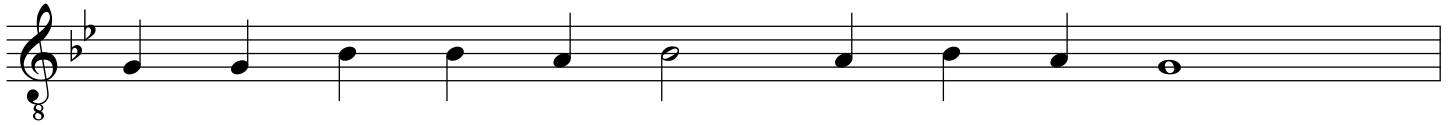
Third Typical Antiphon

Znamenny Chant

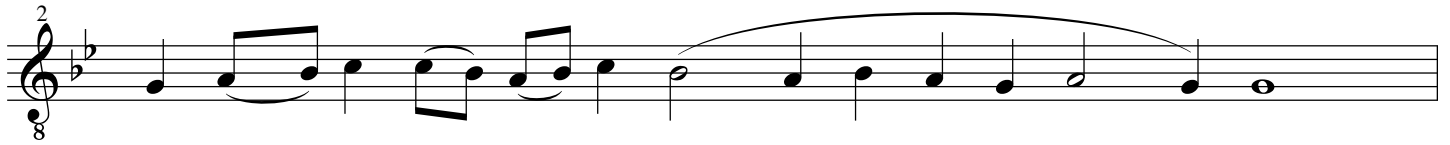
The Beatitudes

Arranged by Monastery
of St. John, Manton, CA

A

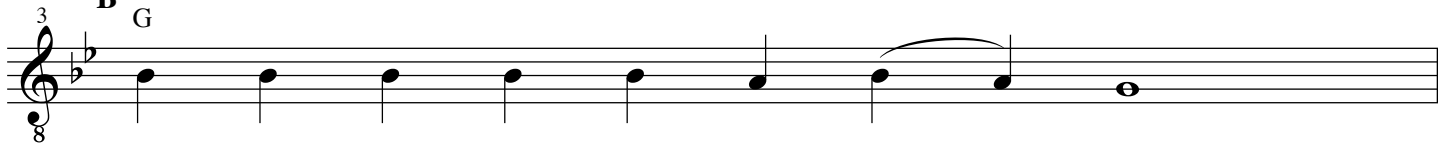


In Thy King - dom re - mem - ber us, O Lord,

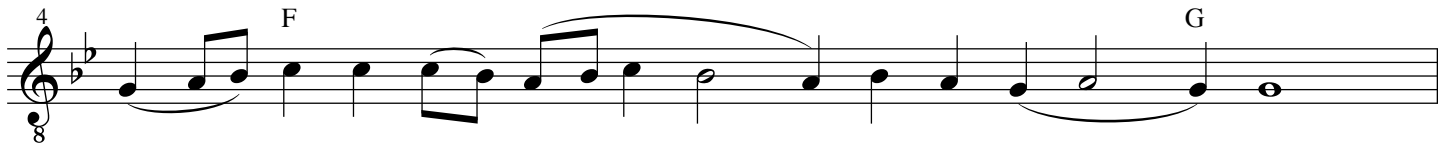


when Thou com - est in Thy King - - - - - dom.

B



Bles - sed are the poor in spi - - - rit,



for their is the King - - - - - dom of Hea - - - ven.

A

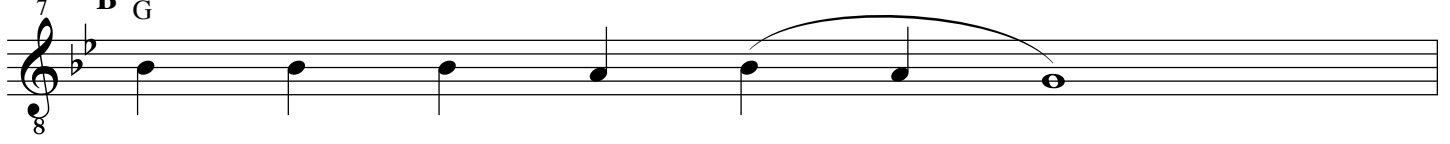


Bles - sed are those who mourn,



for they shall be com - - - - - fort - ed.

B



Bles - sed are the meek,

8 F G
for — they shall — in — her — — — — — it the earth.

9 A G
Bles — sed are those who hun — ger and thirst af — ter right — eous — ness,

10 F G
for — they shall — be sat — — — — — is — fied.

8* B G
11 Bles — sed are the mer — ci — ful,

12 F G
for — they shall — ob — tain — — — — — mer — — — cy.

7 A G
13 Bles — sed are the pure in heart,

14 F G
for — they shall — see — — — — — God.

6 B G
15 Bles — sed are the peace — mak — ers,

**For 8 troparia begin inserting here*

16
8

F G

for _____ they shall be called _____ the sons of God.

Detailed description: This is the first musical staff on the page. It is in G major (one flat) and 8/8 time. The staff contains a melody for measure 16. The notes are G4, A4, B4, C5, B4, A4, G4, F4, E4, D4, C4. There are two slurs: one under G4-A4-B4-C5 and another under B4-A4-G4-F4-E4-D4-C4. Chords F and G are indicated above the staff.

5
17
8

A G

Bles - sed are those who are per - se - cut - ed for right-eous-ness' sake,

Detailed description: This is the second musical staff. It is in G major (one flat) and 8/8 time. The staff contains a melody for measure 17. The notes are G4, A4, B4, C5, B4, A4, G4, F4, E4, D4, C4. Chords A and G are indicated above the staff.

18
8

F G

for _____ theirs is the King - - - dom _____ of Hea - - - ven.

Detailed description: This is the third musical staff. It is in G major (one flat) and 8/8 time. The staff contains a melody for measure 18. The notes are G4, A4, B4, C5, B4, A4, G4, F4, E4, D4, C4. There are two slurs: one under G4-A4-B4-C5 and another under B4-A4-G4-F4-E4-D4-C4. Chords F and G are indicated above the staff.

4
19
8

B G

Bles - sed are you when men shall re - vile you and per - se - cute you,

Detailed description: This is the fourth musical staff. It is in G major (one flat) and 8/8 time. The staff contains a melody for measure 19. The notes are G4, A4, B4, C5, B4, A4, G4, F4, E4, D4, C4. Chords B and G are indicated above the staff.

20
8

F G

and shall _____ say all man-ner of e - vil _____ a - gainst you _____ false-ly for my _____ sake.

Detailed description: This is the fifth musical staff. It is in G major (one flat) and 8/8 time. The staff contains a melody for measure 20. The notes are G4, A4, B4, C5, B4, A4, G4, F4, E4, D4, C4. There are two slurs: one under G4-A4-B4-C5 and another under B4-A4-G4-F4-E4-D4-C4. Chords F and G are indicated above the staff.

3
21
8

f poco rit. A & B
G

Re - joice and be ex - ceed - ing - ly glad,

Detailed description: This is the sixth musical staff. It is in G major (one flat) and 8/8 time. The staff contains a melody for measure 21. The notes are G4, A4, B4, C5, B4, A4, G4, F4, E4, D4, C4. Chord G is indicated above the staff. The dynamic marking is *f* and the tempo marking is *poco rit.* with the letters A and B.

22
8

F G

for _____ great is your _____ re - ward _____ in hea - ven.

Detailed description: This is the seventh musical staff. It is in G major (one flat) and 8/8 time. The staff contains a melody for measure 22. The notes are G4, A4, B4, C5, B4, A4, G4, F4, E4, D4, C4. There are two slurs: one under G4-A4-B4-C5 and another under B4-A4-G4-F4-E4-D4-C4. Chords F and G are indicated above the staff.

2 (Use only if doing troparia during the beatitudes)

23 G

Glory to the Fa - ther and to the Son

24 F G

and to the Ho - ly Spi - - - - - rit.

1 25 G

Both now and e - - - - ver,

26 F G

and un - to the a - ges of a - ges. A - - - - men.